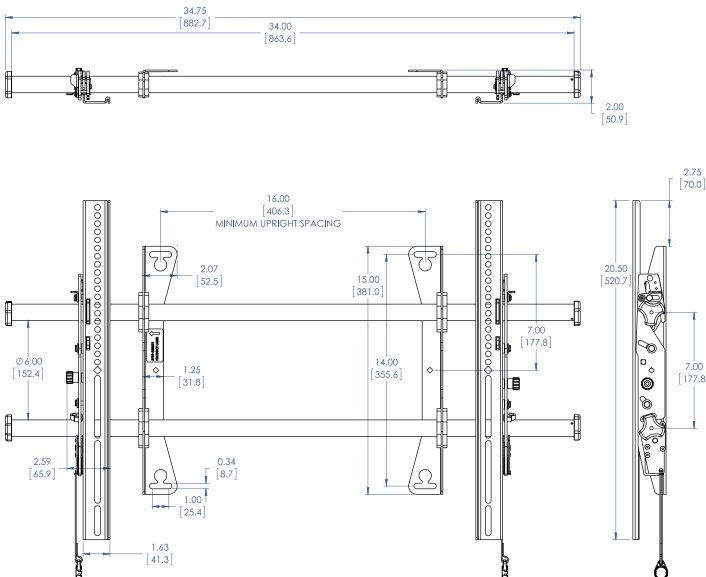


## VW-WM MOUNT

GVision's tilt wall mounts were developed based on installer feedback and direct observations of installers in the field. The features include Centerless shift, Centris tilt and ClickConnect Latching. Benefits included increased stability, fast installation, easy cable management and security. The installer-inspired tilt mount solves top flat panel installation problems, offering flexible adjustments for large displays with a low-profile display mounting solution.

### DIMENSIONS



### FEATURES

- Integrated teardrop design speeds up wall plate installation by allowing pre-installation of the bolts to the wall
- Centerless Shift provides up to 17.5" (445 mm) of post-installation lateral shift - 8.75" (222 mm) left/right of uprights - for limitless centering
- Centris low-profile tilt uses the center of gravity to balance the screen while maintaining a low profile
- Set screws keep the mount rigid, stable and secure throughout the life of the installation
- ClickConnect offers an audible click when the screen safely engages with the mount
- Built-in cable stand provides easy access under the screen
- A full line of accessories can be installed with the mount and the entire unit can be adjusted together
- Multiple installation options for various stud distances
- Quick-Store Cords use magnets to easily store and access pull cords
- Improved cable management with new end caps
- Integrated Security

### SPECIFICATIONS

GENERAL	VW-WM
Typical Screen Sizes	42 - 86 in
Color	Black
Solution Type	Universal
Orientation	Landscape
Certifications	UL Listed, OSHPD Approved, TÜV Certified
MECHANICAL	
Lateral Shift	17.4" (441 mm)
Minimum Depth	2" (51 mm)
Number Of Monitors	1
Tilt	+2°, -12°
Wall Stud Compatibility In	16" - 32" (406 mm - 813 mm)
Weight Capacity	200 lbs (90.7 kg)
DIMENSION/WEIGHT	
Mount Unit	16.5" x 34.75" x 2"
Shipping	18.34 lbs (8.32 kg)
MOUNTING PATTERN	
Compatibility	100 x 100 - 879 x 500 mm

*Specifications subject to change without any notice*